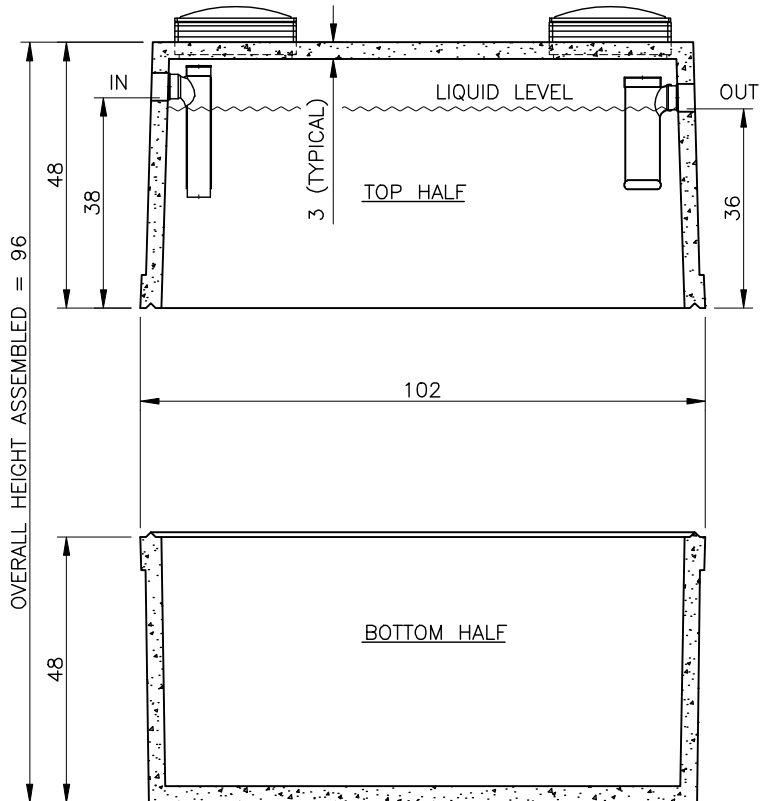
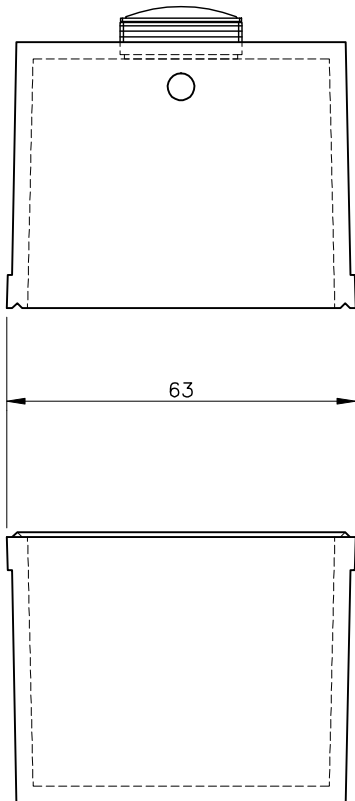


ASSEMBLED HEIGHT "IN" = 86"

ASSEMBLED HEIGHT "OUT" = 84"



WEIGHT:  
9400 LBS. 4275 KG.



1500 Imp. GAL. SINGLE COMP. SEPTIC TANK

DRAWN BY: B.L.	CHECKED BY:	APPROVED BY:	DATE: SEPT. 15 2006
ASSEMBLY DWG.	PREVIOUS DWG.	DRAWING NO.	REVISION
SCALE: 3/8"=1'-0" ISOMETRIC: 1/4"=1'-0"		S0206	
DO NOT SCALE THIS DRAWING			